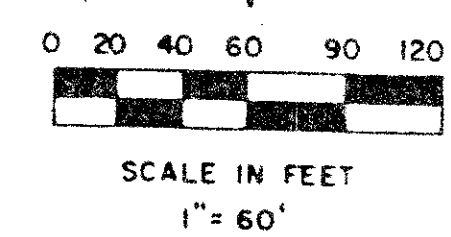
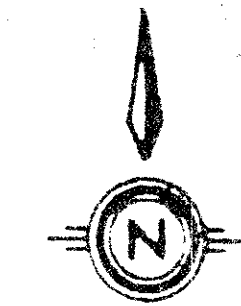


BOCA WOODS COUNTRY CLUB PLAT 7

A PART OF BOCA WOODS COUNTRY CLUB, A P.U.D.
SITUATE IN SECTION 24, TOWNSHIP 47 SOUTH, RANGE 41 EAST,
PALM BEACH COUNTY, FLORIDA.

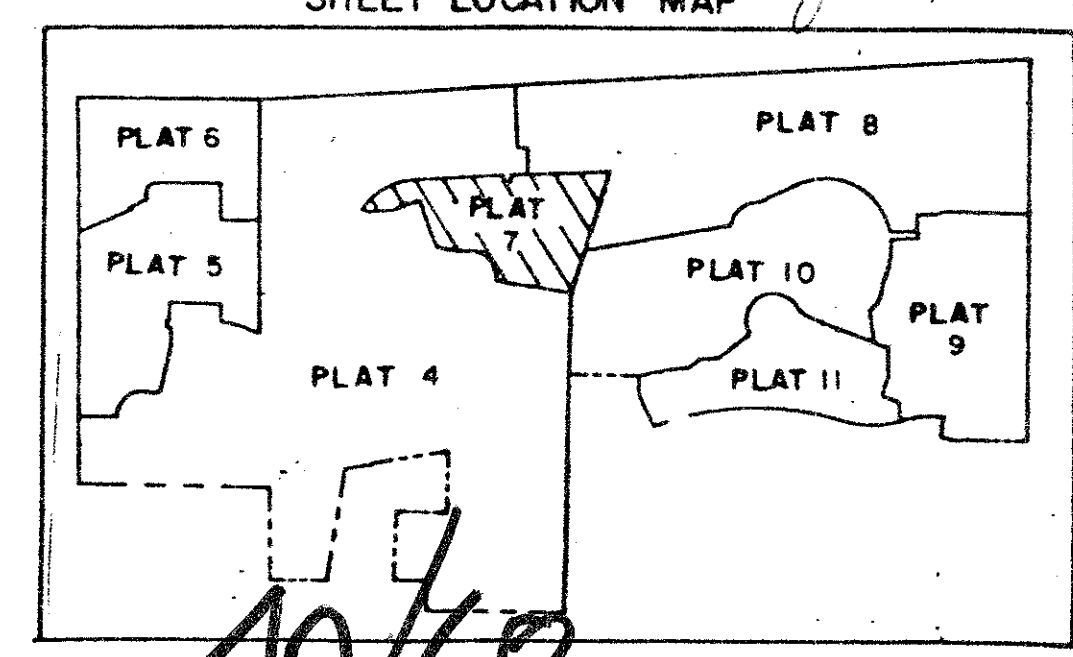
SHEET 2 OF 2

STATE OF FLORIDA
COUNTY OF PALM BEACH
THIS PLAT WAS FILED FOR
RECORD AT _____ DAY OF _____
AD, 1984 AND DULY RECORDED
IN PLAT BOOK _____ ON PAGES
_____ AND _____
JOHN B. DUNKLE, CLERK
CIRCUIT COURT
BY: _____, D.C.



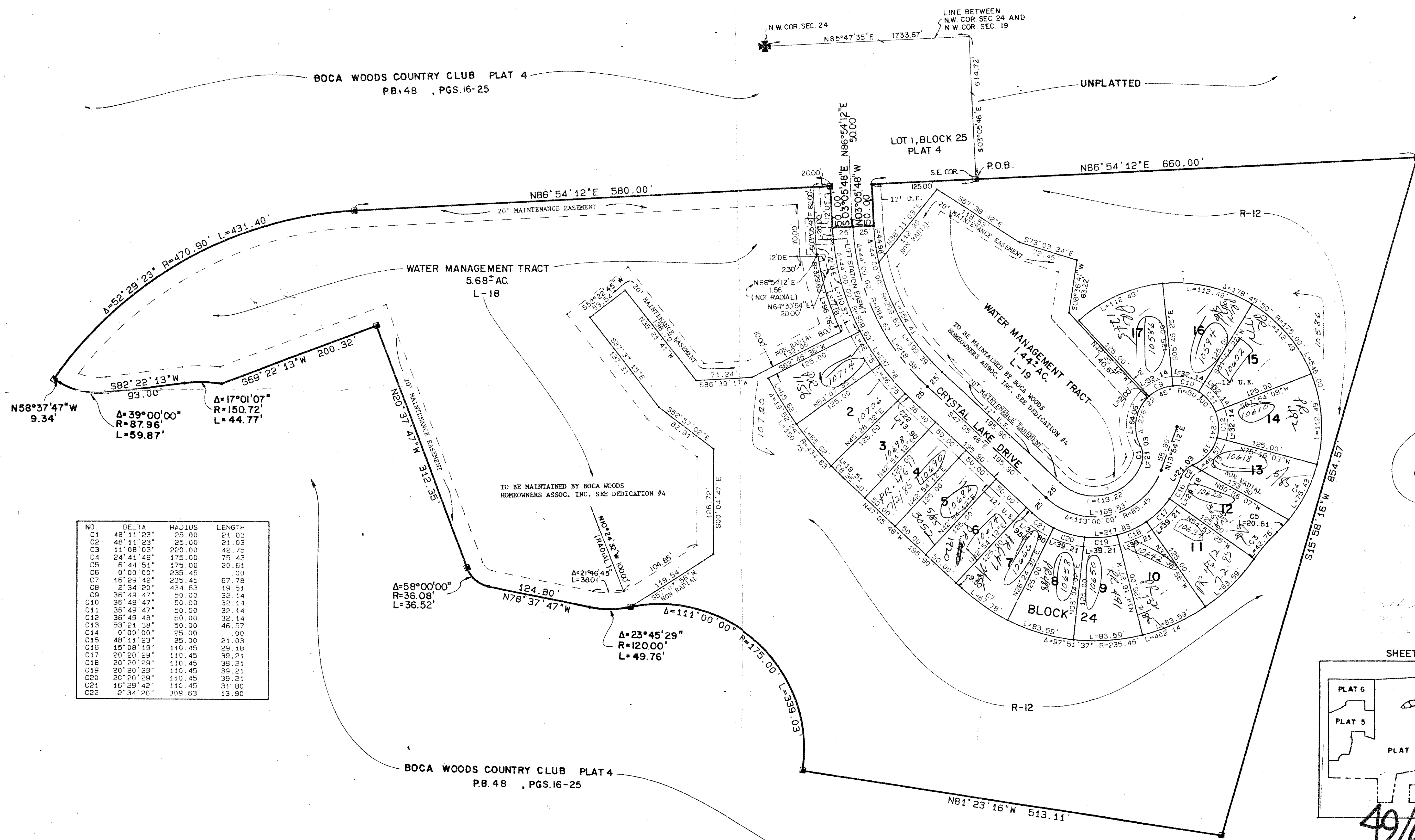
215-304
UNPLATTED

SHEET LOCATION MAP



49/68

Meridian Surveying and mapping inc.
WEST PALM BEACH, FLORIDA
DRAWN: M.E.H. DATE: MAY, 1984
CHECKED: R.A.H. SCALE: 1" = 60'
DRAWING NO: 82-P-051
BOCA WOODS COUNTRY CLUB
PLAT 7



NO.	DELTA	RADIUS	LENGTH
C1	48° 11' 23"	25.00	21.03
C2	48° 11' 23"	25.00	21.03
C3	11° 08' 03"	220.00	42.75
C4	24° 41' 49"	175.00	75.43
C5	6° 44' 51"	175.00	20.61
C6	0° 00' 00"	235.45	0.00
C7	16° 29' 42"	235.45	67.78
C8	2° 34' 20"	434.63	19.51
C9	36° 49' 47"	50.00	32.14
C10	36° 49' 47"	50.00	32.14
C11	36° 49' 47"	50.00	32.14
C12	36° 49' 48"	50.00	32.14
C13	55° 21' 38"	50.00	46.57
C14	0° 00' 00"	25.00	0.00
C15	48° 11' 23"	25.00	21.03
C16	15° 08' 19"	110.45	29.18
C17	20° 20' 29"	110.45	39.21
C18	20° 20' 29"	110.45	39.21
C19	20° 20' 29"	110.45	39.21
C20	20° 20' 29"	110.45	39.21
C21	16° 29' 42"	110.45	31.80
C22	2° 34' 20"	309.63	13.90

LEAF NUMBER
49/68

DRAWING NUMBER

DRAWING NUMBER

DRAWING NUMBER

PLAN HOLD CORPORATION • IRVINE, CALIFORNIA
REORDER BY NUMBER 0754R